



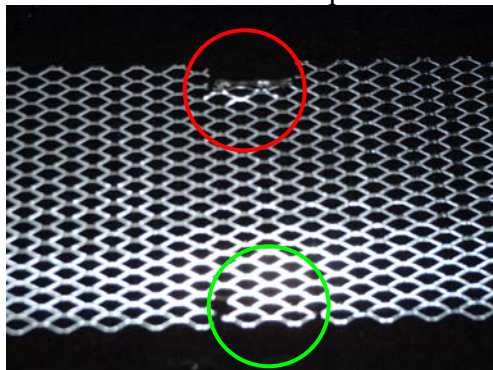
## INSTRUCTIONS



Materials needed: Grills  
Needlenose Pliers

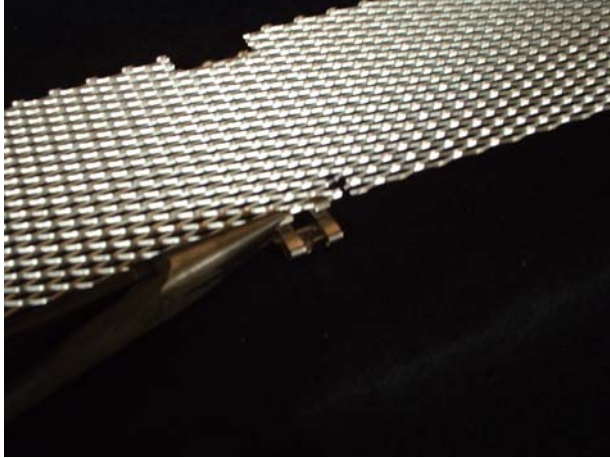
Estimated Install time: 15 Minutes

1. Read instructions before installation.
2. Assembly
  - a. Bend the tab in the top middle out and around.



- b. Attach the clips. There are three sections on the bottom of the grill where three clips need to be installed. Each of the three sections has two diamonds and cut next to them like the green circled area.

- c. Hook the two prongs on the clip around the diamonds and tighten down like so.



- d. Then tighten down the back part of the clip. If you do not tighten down enough, the clip will not hold well on the bumper. If you tighten down too much, it may be difficult to install.



- e. Repeat for other two clip areas.
3. Take the grill insert and make sure you understand how it is supposed to go on. The top part is the section that has a little fold at the top and the bottom part has 3 clips on it. The clips should clip onto the bottom of the existing opening.
  4. Take the part that has the fold and “hook” it onto the existing bumper near the place indicated on the picture with the arrow.
  5. Center the grill insert and push the clips onto the existing grill. You may have to get under the car to accomplish this.