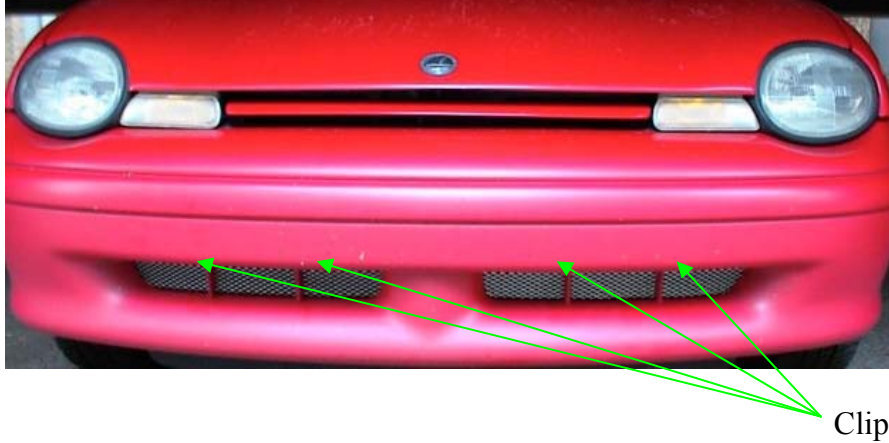




INSTRUCTIONS



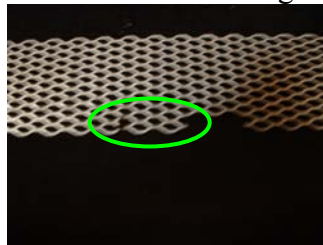
Clips

Materials needed: Grills
Needlenose Pliers

Estimated Install time: 15 minutes

1. Assembly

- a. Locate the clip points. . Each of the four sections has two diamonds and cut next to them like the green circled area.



- b. Hook the two prongs on the clip around the diamonds and tighten down like so.



- c. Then tighten down the back part of the clip. If you do not tighten down enough, the clip will not hold well on the bumper. If you tighten down too much, it may be difficult to install



- d. Repeat for other clip areas.
2. Orient your inserts with the silver tabs to the bottom.
 3. Take one of the inserts and put it behind the existing opening.
 4. Center the insert so that it covers all of the opening and press forward on the silver tabs in a way that they clip onto the existing grill.
 5. Repeat for other side and then test their strength by gently tapping on the grill to ensure it is on correctly.
 6. If they do not seem to be secure please use either wire ties or metal wire to wrap around the vertical pole and slide through the insert to secure it to the car.