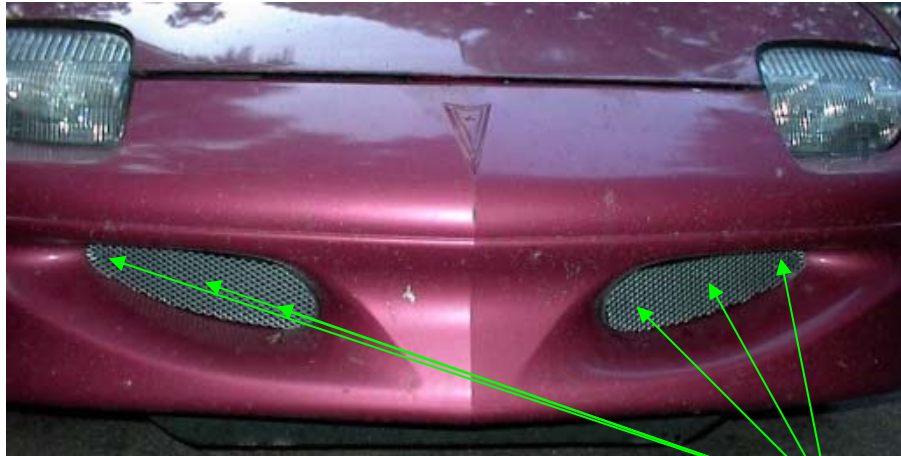




INSTRUCTIONS



Wire Tie Points

Materials needed: Grills (provided)
Metal Wire (provided)
Wire Cutters

Estimated Install time: 30 minutes

1. Start by removing the black grill pieces that are held on place with a torx bit screw (sometimes an allen wrench can get them out if a torx bit is not available)
2. After they are removed, place the new grill insert over the black piece.
3. Cut 6 pieces of wire into 6" sections.
4. Simply loop the wire around the stock grill so the ends are not facing you.
5. Twist the wire tight up against the insert using your pliers.
6. Clip the ends of the wire about 3 winds up with your wire cutters.
7. The new insert enhanced grill should be installed back on the way it came off but this time be sure to feed the screw through the insert too.
8. Thanks and enjoy.