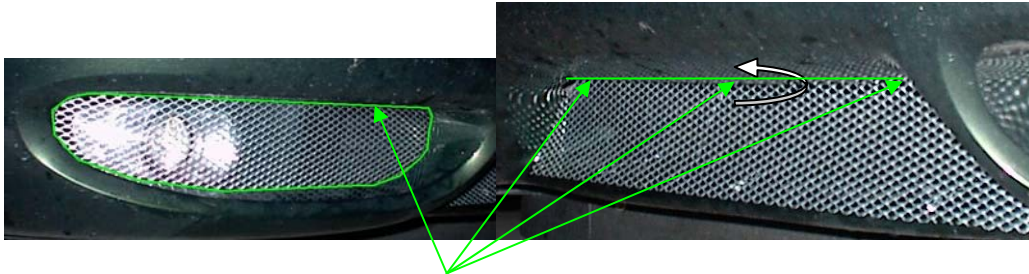




INSTRUCTIONS



PERMATEX Points

Materials needed: Grills (provided)
PERMATEX® Clear Silicone Adhesive Sealant (or similar)

Estimated Install time: 1 hour

1. Read instructions before installation.
2. Begin by taking the one of the pieces that will be going in an outer opening and feed it through the center opening. Move the grill towards the outer fog light opening and keep sliding it through until it covers the area and it is no longer seen in the center section.
3. Repeat for the other side
4. To ensure that the grill will not move under road conditions please use PERMATEX® Clear Silicone Adhesive Sealant to seal the grill on. Use the directions on the bottle for a proper seal.
5. The center piece is installed by sliding the flap under the existing front fascia (designated with the ↻)
6. Reach underneath the car and push it in to make sure it is all the way in.
7. Some PERMATEX® Clear Silicone Adhesive Sealant should be applied where noted in the above pictures to ensure the grill will not come loose.